

# AB60J

## ARTICULATED BOOM LIFT



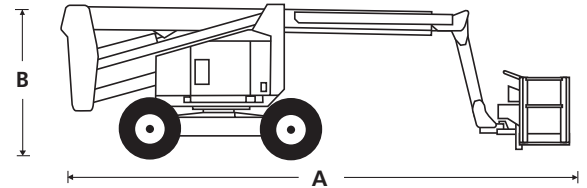
- Tough & reliable diesel articulated boom lift
- Powerful 4-wheel drive for rough terrain
- Robust, rental tough design
- Simple to operate and maintain
- Ideal for both maintenance and construction applications

 **snorkel**<sup>™</sup>  
[www.snorkellifts.com](http://www.snorkellifts.com)

# ARTICULATED BOOM LIFT

# AB60J

DIMENSIONS	AB60J
Max. working height	65 ft 9 in
Max. platform height	59 ft 9 in
Max. horizontal reach	43 ft 1 in
Clearance height at max. outreach	19 ft 6 in
Platform size	8 ft x 3 ft
Overall width	7 ft 11.5 in
Overall length (A)	29 ft 2 in
Stowed height (B)	8 ft 3 in
Ground clearance	12 in

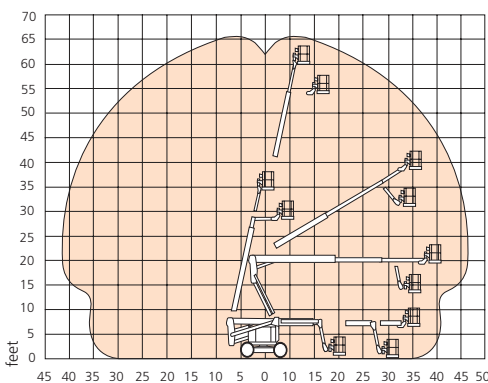


PERFORMANCE	
Platform capacity (SWL)	500 lbs
Max. drive height	59 ft 9 in
Max. wind speed	28 mph
Max. drive speed (stowed)	3.2 mph
Max. drive speed (elevated)	0.6 mph
Jib length	6 ft
Jib working arc	75°
Platform rotation	180°
Superstructure rotation	360° continuous
Tailswing (riser boom elevated)	0 in
Tailswing (riser boom stowed)	60 in
Raise/lower time	125/121 sec
Gradeability	20%
Inside turning radius	17 ft 2.5 in
Outside turning radius	20 ft 3 in
Tires	15 x 19.5 foam filled lug
Controls	proportional joystick drive, lift & rotation
Drive system	4-wheel drive

POWER	
Power source	Kubota V2403 65hp diesel - Tier 4 Final

WEIGHT	
Weight	24,800 lbs

## WORKING ENVELOPE



ANSI Specification ©Snorkel 2021 Specifications subject to change without notice. Photos and diagrams in this brochure are for promotional purposes only. Refer to appropriate Snorkel operators manual for detailed instructions on the proper use and maintenance.

## STANDARD FEATURES

- Snorkel Guard™ secondary guarding system
- Hydraulic platform rotation
- 4-wheel drive
- Proportional drive, lift & swing
- Dual lanyard attachment points
- Horn
- Foam filled tires
- Power line to platform
- 3.5° tilt alarm & cut out
- Drive motion alarm
- Flashing amber light
- 2 year parts & labor, 5 year structural warranty
- ANSI compliant

## OPTIONS

- Special paint colors
- Airline to platform
- Non-marking tires
- AC generator 110V/2.5kW
- Aircraft package
- Deluxe aircraft package
- Cold weather package
- Extreme cold weather package
- Extreme environment package
- Light package
- Tow kit
- Glazier package
- Utility package
- Dual fuel
- Environmental hydraulic oil
- Tool tray
- Pipe rack
- Personal Fall Arrest System
- Snorkel OnSite™ telematics

**snorkel** [www.snorkellifts.com](http://www.snorkellifts.com)

P.O. Box 1160  
 St. Joseph, MO 64502-1160, USA  
 Tel: 1 (785) 989-3000  
 Toll-free: 1 (800) 255-0317  
 Sales Fax: 1 (785) 989-3070  
 Parts Fax: 1 (785) 989-3077